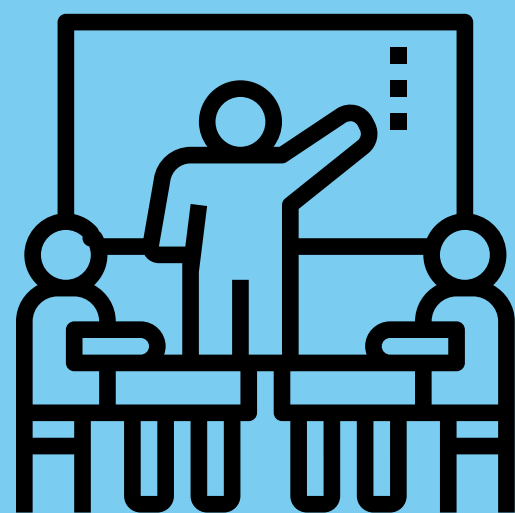


ELEMENTARY ENGLISH LEARNER PROGRAM

Serving Multilingual Learners in an
inclusive and integrated setting

CO-TAUGHT LANGUAGE ARTS AND MATH

Students in the English Learner (EL) Program take language arts and math classes that are co-taught by the content teacher and the English Learner Teacher in an integrated classroom.



ENGLISH-LANGUAGE DEVELOPMENT

Students exit the EL Program after they have achieved a level 5 on the ACCESS Test, which measures academic language of English. Our students English Language development happens in the co-taught classes, the TWI Program, and additionally in an English Language Development class specifically for newcomers when they first enter the country.

EL CASE MANAGERS

Students in the English Learner Program have an EL Teacher who serves as their case manager. Case managers work with the student, the student's teachers, and the student's family in understanding the language development needs of the student, tracking their language progress, and academic needs in classes.



BANTA ELEMENTARY TWO-WAY IMMERSION PROGRAM

In addition to our co-taught classes, we offer bilingual programming at Banta Bilingual School to develop students' academic language and literacy in both Spanish and English. The program is open to English speakers and Spanish speakers during kindergarten and first grade.

